

# Risk, Choquet Portfolios and Quantile Regression

Roger Koenker

University of Illinois, Urbana-Champaign

University of Copenhagen 18-20 May 2016

Joint work with Gib Bassett (UIC) and Gregory Kordas (Athens)

## A Knightian Principle

“The fundamental fact of organized activity is the tendency to transform the uncertainties of human opinion and action into measurable probabilities by forming an approximate evaluation of the judgement and capacity of the man.”

F.H. Knight, (1921) *Risk, Uncertainty and Profit*, p. 311.



# Outline

- Is there a useful role for pessimism in decision theory?
- A pessimistic theory of risk
- How to be pessimistic?

# St. Petersburg Paradox

What would you be willing to pay to play the game:

$$G = \{\text{pay: } p, \quad \text{win: } 2^n \text{ with probability } 2^{-n}, \quad n = 1, 2, \dots\}$$



Daniel Bernoulli (~ 1728) observed that even though the expected payoff was infinite, the gambler who maximized logarithmic **utility** would pay only a finite value to play. For example, given initial wealth 100,000 Roubles, our gambler would be willing to pay only 17 Roubles and 55 kopecks. If initial wealth were only 1000 Roubles, then the value of the game is only about 11 Roubles.



# Expected Utility

To decide between two real valued gambles

$$X \sim F \quad \text{and} \quad Y \sim G$$

we choose  $X$  over  $Y$  if

$$Eu(X) = \int u(x) dF(x) \geq \int u(y) dG(y) = Eu(Y)$$



# On Axiomatics

Suppose we have acts  $P, Q, R, \dots$  in a space  $\mathcal{P}$ , which admits enough convex structure to allow us to consider mixtures,

$$\alpha P + (1 - \alpha)Q \in \mathcal{P} \quad \alpha \in (0, 1)$$

Think of  $P, Q, R$  as probability measures on some underlying outcome/event space,  $\mathcal{X}$ .

Or better, view  $P, Q, R$  as acts mapping a space  $\mathcal{S}$  of soon-to-be-revealed “states of nature” to the space of probability measures on the outcome space,  $\mathcal{X}$ .

# The Expected Utility Theorem

**Theorem**(von-Neumann-Morgenstern) Suppose we have a preference relation  $\{\succeq, \succ, \sim\}$  on  $\mathcal{P}$  satisfying the axioms:

- (A.1) (weak order) For all  $P, Q, R \in \mathcal{P}$ ,  $P \succeq Q$  or  $Q \succeq P$ , and  $P \succeq Q$  and  $Q \succeq R \Rightarrow P \succeq R$ ,
- (A.2) (independence) For all  $P, Q, R \in \mathcal{P}$  and  $\alpha \in (0, 1)$ , then  $P \succ Q \Rightarrow \alpha P + (1 - \alpha)R \succ \alpha Q + (1 - \alpha)R$ ,
- (A.3) (continuity) For all  $P, Q, R \in \mathcal{P}$ , if  $P \succ Q$  and  $Q \succ R$ , then there exist  $\alpha$  and  $\beta \in (0, 1)$ , such that,  $\alpha P + (1 - \alpha)R \succ \beta Q(1 - \beta)R$ .

Then there exists a **linear** function  $u$  on  $\mathcal{P}$  such that for all  $P, Q \in \mathcal{P}$ ,  $P \succ Q$  if and only if  $u(P) > u(Q)$ .

## Weakening the Independence Axiom

The independence axiom seems quite innocuous, but it is extremely powerful. We will consider a weaker form of independence due to Schmeidler (1989).

(A.2') (comonotonic independence) For all **pairwise comonotonic**  $P, Q, R \in \mathcal{P}$  and  $\alpha \in (0, 1)$   $P \succ Q \Rightarrow \alpha P + (1 - \alpha)R \succ \alpha Q + (1 - \alpha)R$ ,

**Definition** Two acts  $P$  and  $Q$  in  $\mathcal{P}$  are **comonotonic**, or similarly ordered, if for **no**  $s$  and  $t$  in  $\mathcal{S}$ ,

$$P(\{t\}) \succ P(\{s\}) \quad \text{and} \quad Q(\{s\}) \succ Q(\{t\}).$$

“If  $P$  is better in state  $t$  than state  $s$ , then  $Q$  is also better in  $t$  than  $s$ .”

## On Comonotonicity

**Definition** The two functions  $X, Y : \Omega \rightarrow \mathbb{R}$  are comonotonic if there exists a third function  $Z : \Omega \rightarrow \mathfrak{R}$  and increasing functions  $f$  and  $g$  such that  $X = f(Z)$  and  $Y = g(Z)$ .

From our point of view the crucial property of comonotonic random variables is the behavior of quantile functions of their sums. For comonotonic random variables  $X, Y$ , we have

$$F_{X+Y}^{-1}(u) = F_X^{-1}(u) + F_Y^{-1}(u)$$

By comonotonicity we have a  $U \sim U[0, 1]$  such that  $Z = g(U) = F_X^{-1}(U) + F_Y^{-1}(U)$  where  $g$  is left continuous and increasing, so by monotone invariance,  $F_{g(U)}^{-1} = g \circ F_U^{-1} = F_X^{-1} + F_Y^{-1}$ .  
Comonotonic random variables are maximally dependent *a la* Fréchet

## Choquet Expected Utility

Among the many proposals offered to extend expected utility theory the most attractive (to us) replaces

$$E_F u(X) = \int_0^1 u(F^{-1}(t)) dt \geq \int_0^1 u(G^{-1}(t)) dt = E_G u(Y)$$

with

$$E_{\nu, F} u(X) = \int_0^1 u(F^{-1}(t)) d\nu(t) \geq \int_0^1 u(G^{-1}(t)) d\nu(t) = E_{\nu, G} u(Y)$$

The measure  $\nu$  permits distortion of the probability assessments **after ordering the outcomes**. This rank dependent form of expected utility has been pioneered by Quiggin (1981), Yaari (1987), Schmeidler (1989), Wakker (1989) and Dennenberg (1990).

## Pessimism



By relaxing the independence axiom we obtain a larger class of preferences representable as Choquet capacities and introducing **pessimism**. The simplest form of Choquet expected utility is based on the “distortion”

$$v_{\alpha}(t) = \min\{t/\alpha, 1\}$$

so

$$E_{v_{\alpha}, F} u(X) = \alpha^{-1} \int_0^{\alpha} u(F^{-1}(t)) dt$$

This exaggerates the probability of the proportion  $\alpha$  of **least** favorable events, and totally discounts the probability of the  $1 - \alpha$  **most** favorable events.

**Expect the worst – and you won't be disappointed.**

## A Smoother example

A simple, yet intriguing, one-parameter family of pessimistic Choquet distortions is the measure:

$$\nu_{\theta}(t) = 1 - (1 - t)^{\theta} \quad \theta \geq 1$$

Note that, changing variables,  $t \rightarrow F_X(u)$ , we have,

$$E_{\nu_{\theta}} X = \int_0^1 F_X^{-1}(t) d\nu(t) = \int_{-\infty}^{\infty} u d(1 - (1 - F_X(u))^{\theta})$$

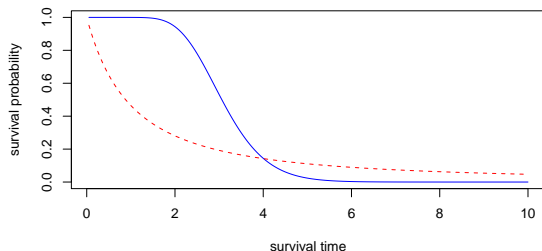
The pessimist imagines that he gets not a single draw from  $X$  but  $\theta$  draws, and from these he always gets the worst. The parameter  $\theta$  is a natural “measure of pessimism,” and need not be an integer.



## Savage on Pessimism

*I have, at least once heard it objected against the personalistic view of probability that, according to that view, two people might be of different opinions, according as one is pessimistic and the other optimistic. I am not sure what position I would take in abstract discussion of whether that alleged property of personalistic views would be objectionable, but I think it is clear from the formal definition of qualitative probability that the particular personalistic view sponsored here does not leave room for optimism and pessimism, however these traits may be interpreted, to play any role in the person's judgement of probabilities. (Savage(1954), p. 68)*

# Pessimistic Medical Decision Making?



Survival Functions for a hypothetical medical treatment: The Lehmann quantile treatment effect (QTE) is the horizontal distance between the survival curves. In this example consideration of the mean treatment effect would slightly favor the (dotted) treatment curve, but the pessimistic patient might favor the (solid) placebo curve. Only the luckiest 15% actually do better under the treatment.

## Risk as Pessimism?

In expected utility theory risk is entirely an attribute of the utility function:

Risk Neutrality  $\Rightarrow u(x) \sim$  affine

Risk Aversion  $\Rightarrow u(x) \sim$  concave

Risk Attraction  $\Rightarrow u(x) \sim$  convex

Locally, the risk premium, i.e. the amount one is willing to pay to accept a zero mean risk,  $X$ , is

$$\pi(w, X) = \frac{1}{2}A(w)V(X)$$

where  $A(w) = -u''(w)/u'(w)$  is the Arrow-Pratt coefficient of absolute risk aversion and  $V(X)$  is the variance of  $X$ . **Why is variance a reasonable measure of risk?**

# A Little Risk Aversion is a Dangerous Thing

Would you accept the gamble:

$$G_1 \quad 50 - 50 \quad \left\langle \begin{array}{l} \text{win } \$110 \\ \text{lose } \$100 \end{array} \right.$$

Suppose you say “no”, then what about the gamble:

$$G_2 \quad 50 - 50 \quad \left\langle \begin{array}{l} \text{win } \$700,000 \\ \text{lose } \$1,000 \end{array} \right.$$

If you say “no” to  $G_1$  for **any** initial wealth up to \$300,000, then you **must** also say “no” to  $G_2$ .

**Moral:** A little local risk aversion over small gambles implies implausibly large risk aversion over large gambles. Reference: Rabin (2000)

# Are Swiss Bicycle Messengers Risk Averse?



When Veloblitz and Flash bicycle messengers from Zurich were confronted with the bet:

$$50 - 50 \quad \left\langle \begin{array}{l} \text{win 8 CHF} \\ \text{lose 5 CHF} \end{array} \right.$$

More than half (54%) rejected the bet.

Reference: Fehr and Götte (2002)

# Coherent Risk

**Definition** (Artzner, Delbaen, Eber and Heath (1999)) For real valued random variables  $X \in \mathcal{X}$  on  $(\Omega, \mathcal{A})$  a mapping  $\rho : \mathcal{X} \rightarrow \mathcal{R}$  is called a coherent risk measure if,

- 1 Monotone:  $X, Y \in \mathcal{X}$ , with  $X \leq Y \Rightarrow \rho(X) \geq \rho(Y)$ .
- 2 Subadditive:  $X, Y, X + Y \in \mathcal{X}$ ,  $\Rightarrow \rho(X + Y) \leq \rho(X) + \rho(Y)$ .
- 3 Linearly Homogeneous: For all  $\lambda \geq 0$  and  $X \in \mathcal{X}$ ,  $\rho(\lambda X) = \lambda \rho(X)$ .
- 4 Translation Invariant: For all  $\lambda \in \mathcal{R}$  and  $X \in \mathcal{X}$ ,  $\rho(\lambda + X) = \rho(X) - \lambda$ .

Many conventional measures of risks including those based on standard deviation are ruled out by these requirements. So are quantile based measures like “value at risk.”

# Choquet $\alpha$ -Risk

The leading example of a coherent risk measure is

$$\rho_{\nu_\alpha}(X) = -\alpha^{-1} \int_0^\alpha F^{-1}(t) dt$$

Variants of this risk measure have been introduced under several names

- Expected shortfall (Acerbi and Tasche (2002))
- Conditional VaR (Rockafellar and Uryasev (2000))
- Tail conditional expectation (Artzner, et al (1999)).

Note that  $\rho_{\nu_\alpha}(X) = -E_{\nu_\alpha, F}(X)$ , so Choquet  $\alpha$ -risk is just negative Choquet expected utility with the distortion function  $\nu_\alpha$ .

## Pessimistic Risk Measures

**Definition** A risk measure  $\rho$  will be called pessimistic if, for some probability measure  $\varphi$  on  $[0, 1]$

$$\rho(X) = \int_0^1 \rho_{\nu_\alpha}(X) d\varphi(\alpha)$$

By Fubini

$$\begin{aligned}\rho(X) &= - \int_0^1 \alpha^{-1} \int_0^\alpha F^{-1}(t) dt d\varphi(\alpha) \\ &= - \int_0^1 F^{-1}(t) \int_t^1 \alpha^{-1} d\varphi(\alpha) dt \\ &\equiv - \int_0^1 F^{-1}(t) d\nu(t)\end{aligned}$$



# Approximating General Pessimistic Risk Measures

We can approximate any pessimistic risk measure by taking

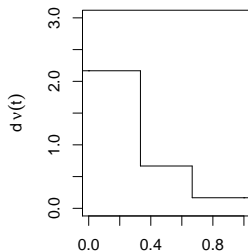
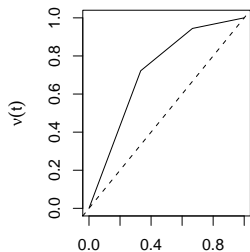
$$d\varphi(t) = \sum \varphi_i \delta_{\tau_i}(t)$$

where  $\delta_\tau$  denotes (Dirac) point mass 1 at  $\tau$ . Then

$$\rho(X) = -\varphi_0 F^{-1}(0) - \int_0^1 F^{-1}(t) \gamma(t) dt$$

where  $\gamma(t) = \sum \varphi_i \tau_i^{-1} I(t < \tau_i)$  and  $\varphi_i > 0$ , with  $\sum \varphi_i = 1$ .

# An Example



$$d\varphi(t) = \frac{1}{2}\delta_{1/3}(t) + \frac{1}{3}\delta_{2/3}(t) + \frac{1}{6}\delta_1(t)$$

## A Theorem

**Theorem** (Kusuoka (2001)) A regular risk measure is *coherent* in the sense of Artzner *et. al.* if and only if it is *pessimistic*.

- Pessimistic Choquet risk measures correspond to *concave*  $\nu$ , i.e., *monotone decreasing*  $d\nu$ .
- Probability assessments are distorted to accentuate the probability of the least favorable events.
- The crucial coherence requirement is subadditivity, or submodularity, or 2-alternatingness in the terminology of Choquet capacities.

## An Example

Samuelson (1963) describes asking a colleague at lunch whether he would be willing to make a

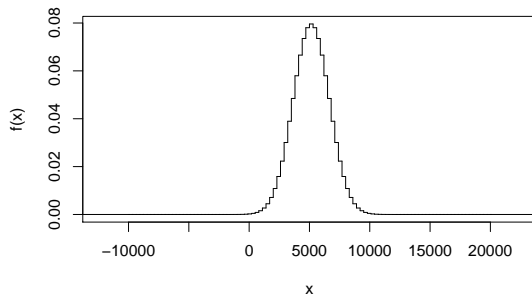
50 – 50 bet  $\left\{ \begin{array}{l} \text{win 200} \\ \text{lose 100} \end{array} \right.$

The colleague (later revealed to be E. Cary Brown) responded

*“no, but I would be willing to make 100 such bets.”*

This response has been interpreted not only as reflecting a basic confusion about how to maximize expected utility but also as a fundamental misunderstanding of the law of large numbers.

## Payoff Density of 100 Samuelson trials



Odds of losing money on the 100 trial bet is 1 chance in 2300.

## Was Brown really irrational?

Suppose, for the sake of simplicity that

$$d\varphi(t) = \frac{1}{2}\delta_{1/2}(t) + \frac{1}{2}\delta_1(t)$$

so for one Samuelson coin flip we have the unfavorable evaluation,

$$E_{v,F}(X) = \frac{1}{2}(-100) + \frac{1}{2}(50) = -25$$

but for  $S = \sum_{i=1}^{100} X_i \sim \text{Bin}(.5, 100)$  we have the favorable evaluation,

$$\begin{aligned} E_{v,F}(S) &= \frac{1}{2}2 \int_0^{1/2} F_S^{-1}(t) dt + \frac{1}{2}(5000) \\ &= 1704.11 + 2500 \\ &= 4204.11 \end{aligned}$$

## How to be Pessimistic

**Theorem** Let  $X$  be a real-valued random variable with  $EX = \mu < \infty$ , and  $\rho_\alpha(u) = u(\alpha - I(u < 0))$ . Then

$$\min_{\xi \in \mathcal{R}} E\rho_\alpha(X - \xi) = \alpha\mu + \rho_{\nu_\alpha}(X)$$

So  $\alpha$  risk can be estimated by the sample analogue

$$\hat{\rho}_{\nu_\alpha}(x) = (n\alpha)^{-1} \min_{\xi} \sum \rho_\alpha(x_i - \xi) - \hat{\mu}_n$$



I knew it! Eventually everything looks like quantile regression to this guy!

## Pessimistic Portfolios

Now let  $X = (X_1, \dots, X_p)$  denote a vector of potential portfolio asset returns and  $Y = X^\top \pi$ , the returns on the portfolio with weights  $\pi$ .

Consider

$$\min_{\pi} \rho_{\nu_\alpha}(Y) - \lambda \mu(Y)$$

Minimize  $\alpha$ -risk subject to a constraint on mean return.

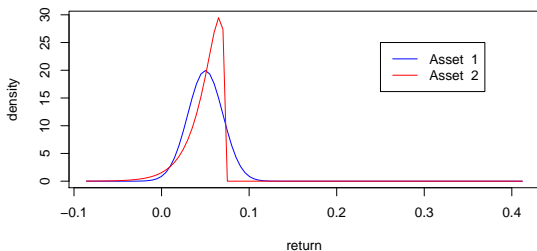
This problem can be formulated as a linear quantile regression problem

$$\min_{(\beta, \xi) \in \mathcal{R}^p} \sum_{i=1}^n \rho_\alpha(x_{i1} - \sum_{j=2}^p (x_{ij} - x_{ij})\beta_j - \xi) \quad \text{s.t.} \quad \bar{x}^\top \pi(\beta) = \mu_0,$$

where  $\pi(\beta) = (1 - \sum_{j=2}^p \beta_j, \beta^\top)^\top$ .

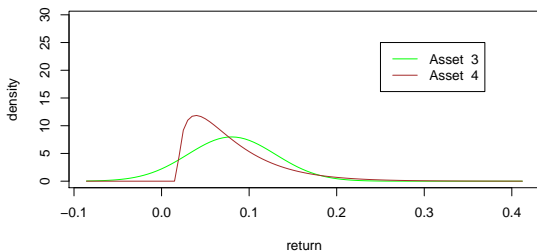


# An Example



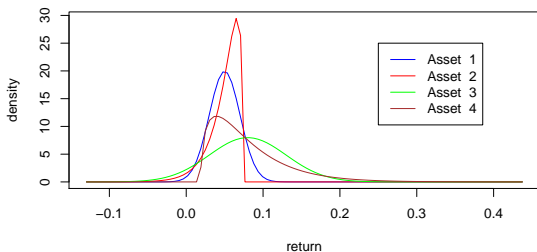
Two asset return densities with identical mean and variance.

## An Example



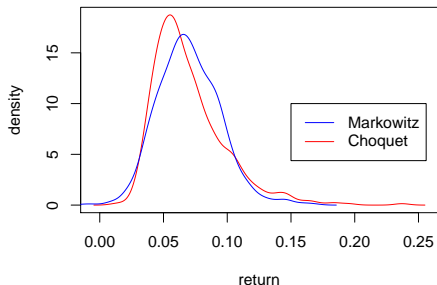
Two more asset return densities with identical mean and variance.

# An Example



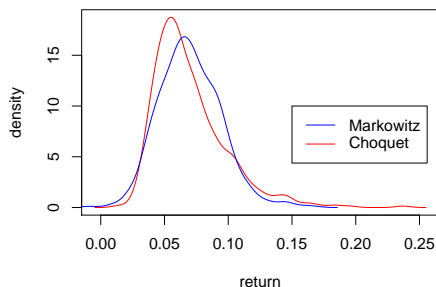
Two pairs of asset return densities with identical mean and variance.

# Optimal Choquet and Markowitz Portfolio Returns



Markowitz portfolio minimizes the standard deviation of returns subject to mean return  $\mu = .07$ . The Choquet portfolio minimizes Choquet risk (for  $\alpha = .10$ ) subject to earning the same mean return. The Choquet portfolio has better performance in both tails than mean-variance Markowitz portfolio.

# Optimal Choquet and Markowitz Portfolio Returns



Now, the Markowitz portfolio minimizes the standard deviation of returns subject to mean return  $\mu = .07$ . The Choquet portfolio maximizes expected return subject to achieving the same Choquet risk (for  $\alpha = .10$ ) as the Markowitz portfolio. Choquet portfolio has expected return  $\mu = .08$  a full percentage point higher than the Markowitz portfolio.

# A Unified Theory of Pessimism

Any pessimistic risk measure may be approximated by

$$\rho_{\nu}(X) = \sum_{k=1}^m \varphi_k \rho_{\nu_{\alpha_k}}(X)$$

where  $\varphi_k > 0$  for  $k = 1, 2, \dots, m$  and  $\sum \varphi_k = 1$ .

Portfolio weights can be estimated for these risk measures by solving linear programs that are weighted sums of quantile regression problems:

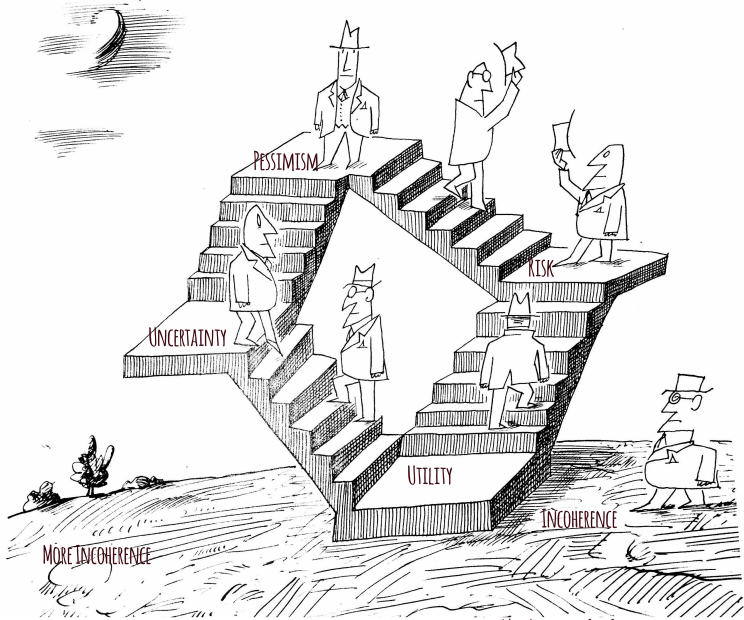
$$\min_{(\beta, \xi) \in \mathcal{R}^p} \sum_{k=1}^m \sum_{i=1}^n \nu_k \rho_{\alpha_k} \left( x_{i1} - \sum_{j=2}^p (x_{i1} - x_{ij}) \beta_j - \xi_k \right) \quad \text{s.t.} \quad \bar{x}^T \pi(\beta) = \mu_0,$$

Software in R is available on from my web pages.

# Conclusions

- Expected Utility is unsatisfactory both as a positive, i.e., descriptive, theory of behavior and as a normative guide to behavior.
- Choquet (non-additive, rank dependent) expected utility provides a simple, tractable alternative.
- Mean-variance Portfolio allocation is also unsatisfactory since it relies on unpalatable assumptions of Gaussian returns, or quadratic utility.
- Choquet portfolio optimization can be formulated as a quantile regression problem thus providing an attractive practical alternative to the dominant mean-variance approach of Markowitz (1952).

# ORGANIZED ACTIVITY



WITH APOLOGUES TO SAUL STEINBERG